

## Model DR 4300 Circular Chart Recorder Replacement Instruction

### External Keypad Kit (51309609-504)

---

**Document Number**      Form: 43-DR-33-67  
                                    Effective: 3/98  
                                    Supersedes: None

---

**Kit Contents**              This External Keypad Kit contains the following parts:

- Door Keypad
- Keypad Backplate
- Flathead #4-40 x .313 Screws (4)
- Door Overlays
- Plastic Window Insert

---

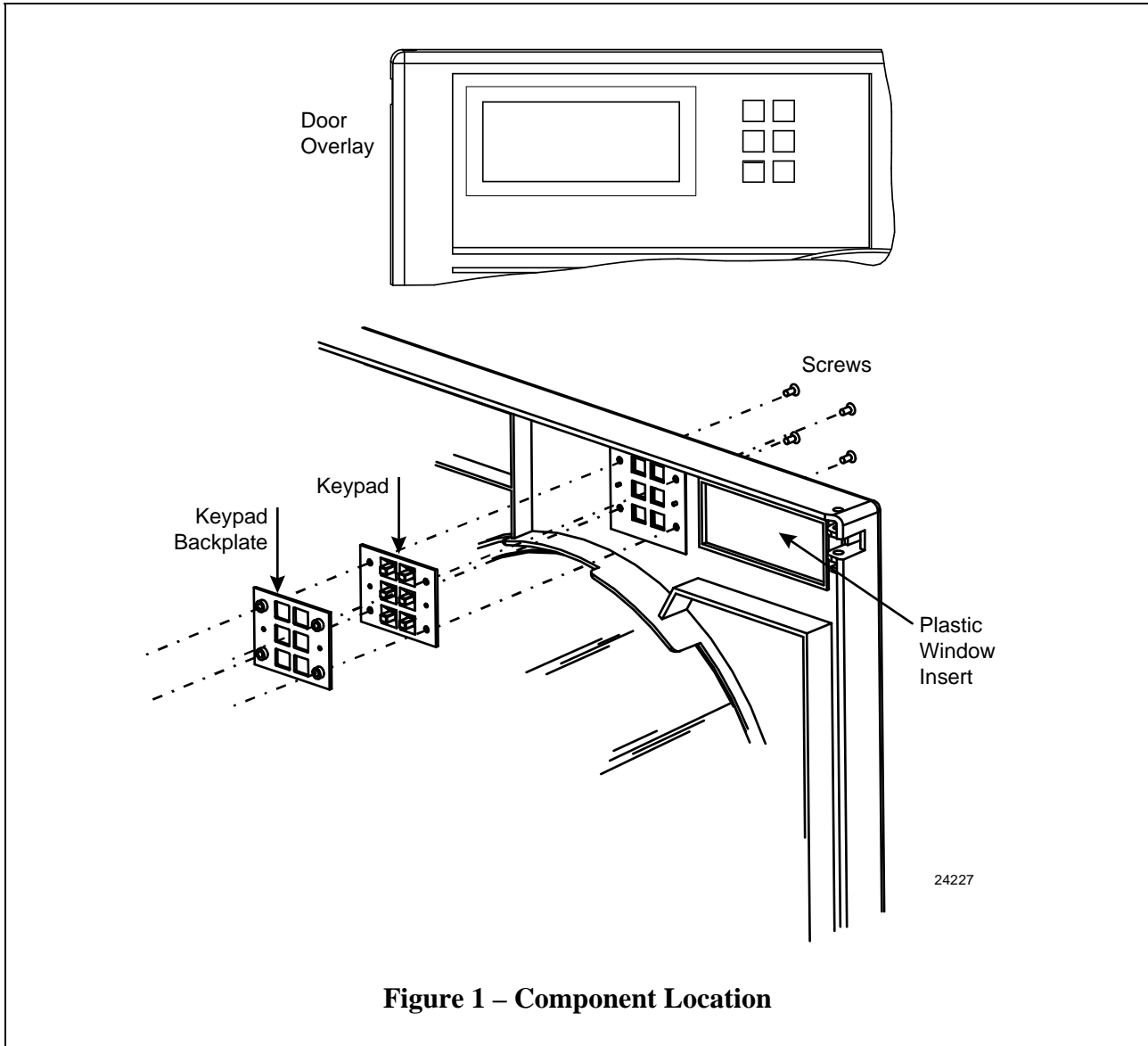
**Summary**                    Enclosed are a new external keypad and parts for your DR4300 recorder.  
Use the following procedure to install the external keypad on the door.

---

---

*Continued next page*

**Component Location** Refer to Figure 1 for the component locations and Table 1 for the installation procedure.



**Figure 1 – Component Location**

**Installation Procedure** Follow the procedure in Table 1 to install the new external door keypad on your recorder.

**Table 1 – External Keypad Installation**

Step	Action
1	Align keypad then keypad backplate with keypad cutout on rear of door (Figure 1).
2	Secure with four screws provided, inserting them from front of door.
3	Insert the clear plastic window into the recess of the window cutout in the door.
4	Peel off the overlay for your specific model and place over the window insert on the front of the door.