

DR 4200, DR4300, DR 4500 & DR 4500A Circular Chart Recorders

Latch Assembly Kit 30756584-001

Lock Assembly Kit 30756584-002

KIT INSTRUCTION 44-45-33-33B

Summary

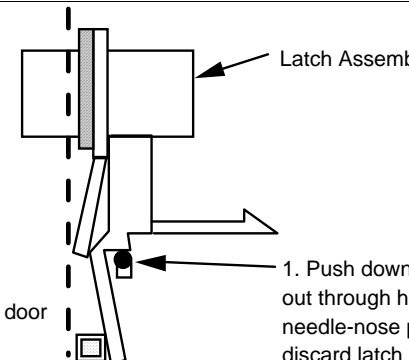
The assembly kit contains all the components you need to replace the latch assembly on the door of a DR 4200, DR4300, DR 4500 or DR 4500A recorder. Table 1 lists contents of the kit. Note that three housing retainers are supplied - one is for use with DR 4200 recorders; one is for older DR 4500 & DR 4500A recorders and one is for newer DR4500A & DR4300 Recorders. Use the appropriate procedure to install the kit. The procedures assume that the chart door is opened, the chart plate is swung out, and the power is removed.

Table 1 - Kit Contents

Component	Part Number	LATCH 30756584-001	LOCK 30756584-002
		Qty	Qty
Latch	30756100-001	1	0
Barrel	30756208-001	1	0
O-ring	30756216-001	1	0
Retaining Nut	30756209-001	1	0
Washer - Delrin	30756218-001	1	1
Latch Retainer	30756102-001	1	1
Housing Retainer – Older (DR 4500 & DR 4500A)	30756204-001	1	1
Housing Retainer – Newer (DR4500A & DR4300)	51205576-001	1	1
Housing Retainer (DR 4200)	30756101-001	1	1
Screw (10-32)	30674113-012	1	1
Cam	30756207-001	1	0
Screw (#10)	30000005-004	1	0
Washer	30004950-000	1	0
Lock Cylinder Assembly	30756047-001	0	1
Washer - S. Steel	30756218-002	1	1

Removal Procedure

***Removing Latch Assembly
(Old Design)***



1. Push down on side clip, and push latch pin out through hole in outer edge of door. Use needle-nose pliers to remove pin, and discard latch assembly.

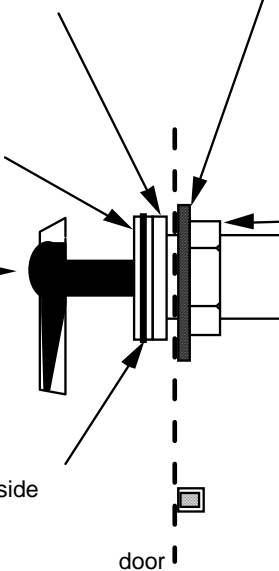
Installation - Latch Assembly

Installation Procedure - Latch Assembly

Installing Latch Assembly Kit

1. Put round washer (30756218-002) on barrel (30756208-001).
NOTE: If steel door use 30756218-001.
2. Insert barrel through hole from front of door.
3. For DR 4200, push housing retainer (30756101-001) with tab facing down over barrel.
For DR 4500 & DR 4500A, push housing retainer (30756204-001) with rectangular cut edge facing down over barrel.
4. Install retaining nut (30756209-001) to secure barrel.
5. Lubricate O-ring (30756216-001) with silicon grease and slip it on outside of barrel.
6. Push latch (30756100-001) into barrel with pawl pointing down.
7. Put "D" shaped hole of cam (30756207-001) on latch with large edge of cam facing down. Secure cam to end of lock cylinder with washer (30004950-000) and #10 screw (3000005-004).
8. For proper installation, latch must turn counterclockwise to open as viewed from front of door.

NOTE: If you are installing the latch on a steel door, skip Step 3.



Installing Latch on Chart Plate

1. Remove rubber O-ring from back of captive screw in chart plate.
2. Position retaining latch (30756102-001) in rectangular cutout of chart plate. Insert 10-32 screw (30674113-012) through retaining latch and slip rubber O-ring over screw from back of chart plate.
3. Close chart plate and secure with captive screw.

NOTE: Always secure chart plate to case before engaging latch.

4. Close and latch door.

Installation - Lock Assembly

Installation Procedure - Latch Assembly

Installing Lock Assembly Kit

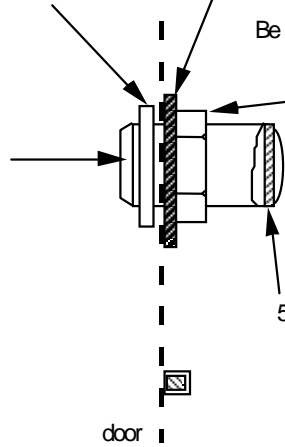
NOTE: *Lock assembly supplied may require some disassembly prior to performing installation procedure.*

1. Put round washer (30756218-002) on lock cylinder (30756047-001).
NOTE: If steel door use washer 30756218-001.
2. Insert lock cylinder through hole from front of door.

NOTE: *If you are installing the lock on a steel door, skip Step 3.*

3. Push large square washer 30756204-001 for DR 4500 & DR 4500A; 30756101-001 for DR 4200 over lock cylinder, or 51205576-001 for DR4300 & Newer DR4500A.

Be sure key slot in cylinder faces right edge of door.



4. Install retaining nut* to secure lock cylinder.

5. Put "D" shaped hole of cam* on lock cylinder with large edge of cam facing outer edge of door.. Secure cam to end of lock cylinder with the screw (& washer) included in assembly.

6. For proper installation, key should turn downward to lock door.

* Component supplied as part of the lock assembly.

Installing Latch on Chart Plate

1. Remove rubber O-ring from back of captive screw in chart plate.
2. Position retaining latch (30756102-001) in rectangular cutout of chart plate. Insert 10-32 screw (30674113-012) through retaining latch and slip rubber O-ring over screw from back of chart plate.
3. Close chart plate and secure with captive screw.

NOTE: *Always secure chart plate to case before engaging lock.*

4. Close and lock door.

Honeywell

Helping You Control Your World

Industrial Automation and Control

Honeywell, Inc.

1100 Virginia Drive

Fort Washington, Pennsylvania 19034

