

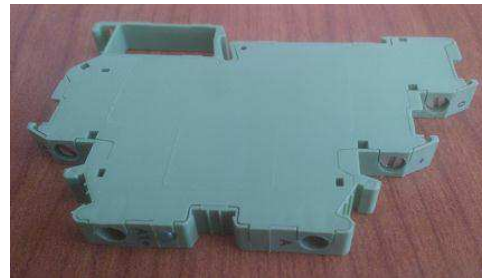
CUSTOMER DRAWING DOCUMENT

DESCRIPTION:

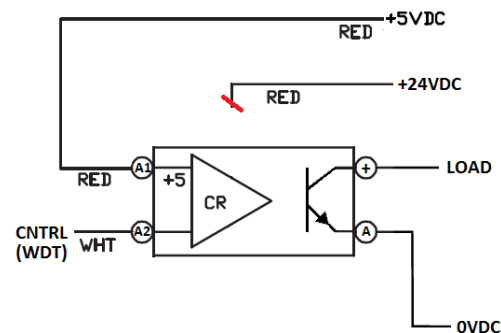
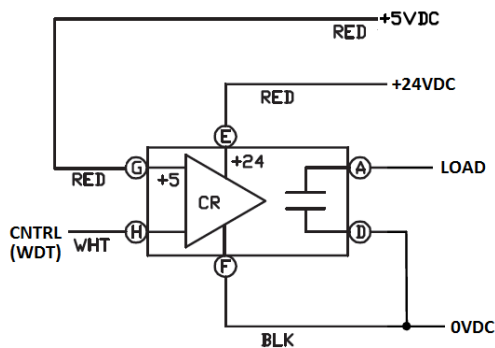
REPLACING OLDER ENTRELEC OPTICALLY ISOLATED RELAY

NOTES:

If replacing an Entrelec 0010.131.14 relay (shown below left) – now obsolete by manufacturer – use the revised TE PN 1395831-1 relay (shown below right) along with modified press machine wiring.



The relays wiring terminals have different names but are functionally similar. A typical press application wiring schematic is shown below left with the revised relay and wiring shown below right. The revised relay does not require the use of 24VDC – remove this wire back to its source.



A	ECR-15-013626					16Sep15	VL
REV	REVISION RECORD					DATE	APPROVED BY
LOC	DIST	DRAWN BY:	DATE:	CHECKED BY:	DATE:	APPROVED BY:	DATE:
-	-	P.Borisuk	4-23-03	-	-	-	-

Mouser Electronics

Authorized Distributor

Click to View Pricing, Inventory, Delivery & Lifecycle Information:

[TE Connectivity:](#)

[1395831-1](#)